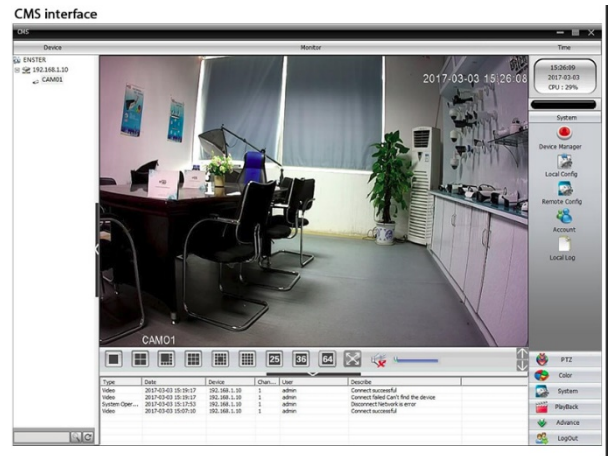


NVR-OPT-7508P-4K

Network Video Recorder

SYSTEM OVERVIEW

Support VGA, HDMI full HD output simultaneously; Support ONVIF; access third party; Support Web, CMS, center platform management software XMEYE, provide SDK development; Support multiple cloud technology, network penetration, alarm information pushed to your phone and other functions; Support various mobile monitoring (iPhone, Android); Remote Access, With DNS (ARSP), easy to monitor remotely.



The NVR-OPT-7508P-4K is a network video recorder that provides excellent performance and high recording quality, making it ideal for IP video surveillance applications. The NVR features a powerful processor capable of processing 4K resolution images for applications that require high image details. The NVR can also function as edge storage, central storage, or backup storage, with an intuitive shortcut operation menu for remote management and control.

The easy-to-install design of the NVR makes it suitable for a wide range of applications such as public safety, water conservancy, transportation, city centers, education, and financial institutions. Additionally, the NVR is compatible with various third-party devices, making it an ideal solution for surveillance systems that operate independently of a OPTOKON video management system (VMS).

The NVR has an open architecture that supports multi-user access and is compatible with the ONVIF 2.4 protocol, allowing for interoperability with 4K cameras. With its advanced features and compatibility with various devices and protocols, the NVR-OPT-7508P-4K is an excellent choice for businesses and organizations seeking high-quality video surveillance solutions.

Multi-system support



TECHNICAL SPECIFICATION

Model No.		NVR-OPT-7508P-4K
System	Main processor	Hi3536C
	Operating system	Embedded Linux
	System resource	Simultaneous multi-channel real-time recording, playback, network operation, USB backup
Interface	Operation interface	16-bit true color graphic menu operation interface, support mouse operation
	Preview	1/2/4/6/8/9/16
Video	Video input (IP)	16ch 4K (Access bandwidth 240Mbps , Need to dock with Gigabit POE module)
	Video compression	H.265AI/H.265+ (Compatible with H.265/H.264)
	Display quality	Max: 4K
	Playback quality	4K/5M/4M/3M/1080P
	VR	Unsupport
	human shape / Face	Support(depend on camera)
Audio	Audio compression	G.711A
	intercom	support
Record and playback	Record mode	Manual>Alarm>Dynamic Detection>Timing
	Local payback(real-time+Unreal-time)	4K (1+2) /5M (2+3) /4M (2+5) /3M (3+6) /1080P (5+9)
	Search mode	Search by Time/Calendar/Event/Channel/Face
Storage and back up	Record Storage	HDD 、 network
	Backup mode	Network backup, USB hard disk, USB burner, SATA burner
Interface	Video output	1ch VGA , 1ch HDMI HD output
	Audio I/O	1/1 (3.5MM)
	Alarm I/O	0/0
	Network interface	The expansion board provides a network connection
	USB interface	2*USB2.0 ports
	Hard disk	2* SATA(Up to 14TB for each disk
	Serial interface	No
Wireless interface	3G, WIFI (extension via USB)	

Other	ONVIF	Support
	Power supply	Expansion board 12V power supply
	Power Consumption	<10W(Without HDD)
	Work environment	Temperature:0 °C - 55 °C , Humidity:10% - 90%RH , Atm:86kpa - 106kp
	Dimension	L350*W275*H80MM
	Weight	1.6KG